

Lenovo ThinkPad L15 GEN 2

ThinkPad L15 Gen 2 combines power, ports, and performance to create an enterprise laptop that handles data-entry, finance, and accounting work with ease while also supporting video streaming, presentations, and more. Powered by AMD Ryzen™ 5000 PRO series processors that deliver enterprise-grade computing solutions designed for quality, reliability, and longevity, the ThinkPad L15 Gen 2 enables business productivity and collaboration at a surprisingly affordable price.

Built-in Lenovo ThinkShield security features like a Match on Chip Fingerprint Reader keep data, users, and their devices protected. Plus, the integrated AMD security platform, including AMD Shadow Stack, is designed with multilayered, modern security features to help address today's sophisticated attacks.

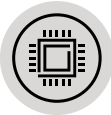
Smarter
technology
for all

Lenovo



AMD
RYZEN
PRO

Lenovo ThinkPad L15 GEN 2



RELIABLE PERFORMANCE

ThinkPad L15 Gen 2 elevates business computing with the latest AMD Ryzen™ 5000 PRO series processors and integrated AMD Radeon™ graphics, up to 64GB DDR4 memory, and up to 1TB PCIe SSD storage. Up to 10.6 hours¹ of battery life means you can stay productive all day from anywhere.



IMPROVED CONNECTIVITY

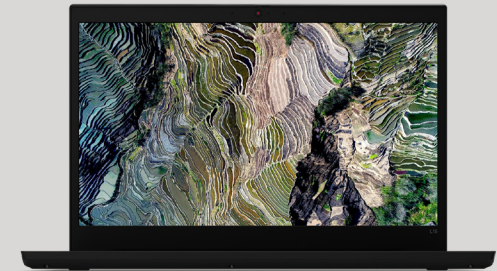
Users can stay connected to the data and devices that drive their business with WiFi 6, LTE CAT12, and HDMI 2.0 ports. Whether connecting to multiple 4K displays for work or enjoying faster wireless speeds while streaming movies at home, users are assured more productive uptime and more enjoyable downtime.



MODERN EFFICIENCY

ThinkPad L15 Gen 2 helps users work smarter and faster with features like Modern Standby, which enables the device to wake from sleep in less than one second and stay up-to-date even during sleep mode. Packed with the most processing cores available for ultrathin laptops, this device won't slow you down.

¹Based on testing with MobileMark 2018. Battery life varies significantly with settings, usage, and other factors. Projected up to 10.6 hours using MM18. Official claims/final results TBD. Official results will be available at results.bapco.com at product launch.



Lenovo

connectivity

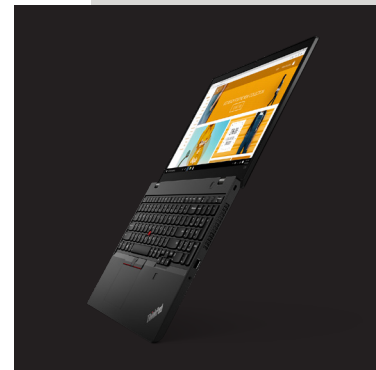
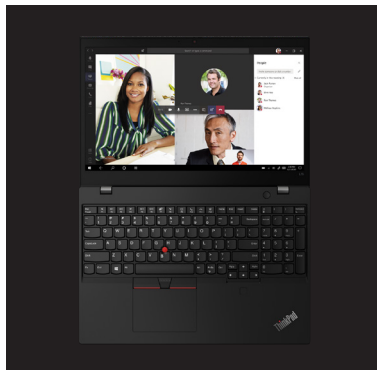
Connect to the data and devices users depend on with global WWAN Cat12 LTE, Modern Standby, and fast WLAN with WiFi 6 (802.11 AX).

security

With ever-evolving cybercrime, today's devices must meet data security demands. Integrated ThinkShield features plus AMD security provides layers of defenses, from silicon up through OS and system-level security.

durability

ThinkPad L15 Gen 2 is MIL-STD-810H tested to withstand 12 methods and 26 procedures—industry-leading standards for product durability and reliability.



Lenovo ThinkPad L15 GEN 2

performance

PROCESSOR

Up to AMD Ryzen™ 5000 PRO series processors

OPERATING SYSTEM

Up to Windows 10 Pro

GRAPHICS

Integrated AMD Radeon™ Graphics

CAMERA

HD camera with webcam privacy shutter

FHD IR hybrid camera with webcam privacy shutter¹

MEMORY

Up to 64GB (3200Mhz)

2x DIMM DDR4

STORAGE

Up to 1TB PCIe SSD

BATTERY

Up to 10.6 hours², (MM18), 45Whr battery

AC ADAPTER

Up to Type-C 65W (supports RapidCharge)

AUDIO

Dolby® Audio Premium Software

connectivity

INPUT/OUTPUT PORTS

2x USB-A 3.2

1x USB-C 3.2 Gen 1

1x USB-C 3.2 Gen 2

1x HDMI 2.0

1x RJ45

1x MicroSD Card

1x Audio (Headphone and Microphone Combo Jack)

WIFI

WiFi 6 802.11 AX

LTE CAT12

NFC

No

DOCKING

Side mechanical dock

USB cable dock

AMD
RYZEN
PRO

security

Power-on Match on Chip Touch Fingerprint Reader

IR camera with privacy shutter

dTPM 2.0 chip

Webcam privacy shutter

design

DISPLAY

15" HD TN (220nit)

15" FHD IPS (250nit)

15" FHD IPS On-Cell Touch (300nit)

DIMENSIONS (W X D X H)

366.5 x 250 x 21 mm / 14.43 x 9.84 x 0.83 in

WEIGHT

Starting at 1.99 kg/4.39 lbs

KEYBOARD

Keyboard with number pad

Backlit is optional.

COLORS

Black

CERTIFICATIONS

EPEAT® Gold

Energy Star 8.0

optional services

Lenovo offers a comprehensive portfolio of services to support and protect your ThinkPad investment—so you can focus on your work, not your IT.

PREMIER SUPPORT

Direct 24x7x365 access to the elite Lenovo engineers who will provide unscripted troubleshooting and comprehensive support for hardware and software. That means less downtime and increased productivity.^{3,4}

ACCIDENTAL DAMAGE PROTECTION (ADP)

Prevents the hassles of unexpected repair costs. Provides coverage for non-warranted damage incurred under normal operating conditions, such as minor spills, drops, or damage to the integrated screen.

WARRANTY EXTENSION (1-YEAR BASE, UP TO 3 YEARS TOTAL)

This fixed-term, fixed-cost service helps you accurately budget for PC expenses, protect your valuable investment, and lower the cost of ownership over time.

¹Optional

²Based on testing with MobileMark 2018. Battery life varies significantly with settings, usage, and other factors. Projected up to 10.6 hours using MM18. Official claims/final results TBD. Official results will be available at results.bapco.com at product launch.

³Up to 5 years total duration.

⁴May not be available in all markets.

accessories



LENOVO THUNDERBOLT 3 ESSENTIAL DOCK PN: Varies by country
This universal dock boosts productivity for your ThinkPad laptop by adding support for up to two 4K displays, an always-on charging port, gigabit Ethernet, and multiple additional ports.



LENOVO POWERED USB-C TRAVEL HUB PN: 4X90S92381
One-stop travel docking is here. Sleek and compact, the Lenovo Powered USB-C Travel Hub features six connection options for charging, displays, and more, as well as a slim, portable design with cable management.



LENOVO 100 STEREO USB HEADSET PN: 4XD0X88524
This business-ready stereo headset features a rotatable boom microphone and passive noise cancellation for clear audio on VoIP calls. It is lightweight for all-day wear with comfortable leather and memory-form earcups. Adjustable headband and boom microphone allow for either left-side or right-side wearing.



LENOVO ESSENTIAL WIRELESS COMBO KEYBOARD AND MOUSE
PN: Varies by country
This combo allows you to connect both keyboard and mouse using only one nano USB wireless receiver. The slim, wireless

©2021 Lenovo. All rights reserved. These products are available while supplies last. For any questions concerning price, please contact your Lenovo Account Executive. Lenovo is not responsible for photographic or typographic errors. Warranty: For a copy of applicable warranties, write to: Warranty Information, 500 Park Offices Drive, RTP, NC 27709, Attn: Dept. ZPYA/B600. Lenovo makes no representation or warranty regarding third-party products or services. Trademarks: Lenovo, the Lenovo logo, Rescue and Recovery, ThinkPad, ThinkCentre, ThinkStation, ThinkVantage, and ThinkVision are trademarks or registered trademarks of Lenovo. Microsoft, Windows, and Vista are registered trademarks of Microsoft Corporation. ©2021 Advanced Micro Devices, Inc. All rights reserved. AMD and the AMD Arrow logo are trademarks of Advanced Micro Devices, Inc. Other company, product and service names may be trademarks or service marks of others.

Lenovo