

Yoga Pro 9i (16", 9)

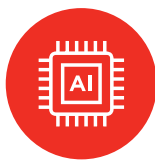
Unleash your power.

Outstanding visuals, outsmarting algorithms, outrageous performance – the Lenovo Yoga Pro 9i powered by the latest Intel® Core™ Ultra processors is everything you could ever wish for in a creator laptop. With Lenovo X Power by its side, it drives a huge boost in performance for the heaviest of creator tasks. Paired with machine learning and the dedicated AI engine of Intel® Core™ Ultra, to boost your productivity, the Yoga Pro 9i is the most hardworking laptop for creators.



Unlock new AI experiences

Expand every capability with mind-blowing performance with the latest Intel® Core™ Ultra processors, a dedicated engine to help you unlock AI experiences. Boosted with Lenovo X Power, it pushes the boundaries of your creativity by cranking up CPU and GPU to run on maximum performance with raw, well-cooled power of up to 130W.



Clever does it all

Powered by Lenovo X Power, this system combines Lenovo AI Core and Intel® Core™ Ultra processors, enhancing creative tasks like 3D rendering and film color correction. It dynamically optimizes processing power, battery life, and cooling, driven by intelligent software and machine learning.



All it takes is a spark

The 16" 3.2K PureSight Pro display is your inspiring creator window to the world, delivering a grid of over 1,600 Mini-LED dimming zones, expertly calibrated colors accurate to Delta E < 1, and smooth motions of up to 165 Hz refresh rate. Microsoft Auto Color Management (ACM) toggles automatically between 100% P3, 100% sRGB, and 100% Adobe RGB color spaces to ensure that you get the highest-quality color possible.



Here comes the dream team

Joining forces with the powerful CPU, the superpowered laptop offers a choice in graphics. With high performance Intel® Arc™ graphics, enjoy accelerated creation and immersive high-resolution gaming, even while on-the-go. Alternatively, plug in to experience the full power of up to NVIDIA® GeForce RTX™ 4070 Series graphics for shorter rendering times and smoother motions.



Yoga Pro 9i (16", 9)

SPECIFICATIONS

Yoga Pro 9 16IMH9*

PERFORMANCE

Processor

Intel® Core™ Ultra 9 Processor 185H
Intel® Core™ Ultra 7 Processor 155H
Intel® Core™ Ultra 5 Processor 125H

Operating System

Windows 11

Graphics

UMA : Intel® ARC™ Graphics

DIS : NVIDIA® GeForce RTX™ 4070 Laptop GPU
8 GB GDDR6 VRAM (Up to 1605 MHz
Boost Clock, Up to 100W TGP)

DIS : NVIDIA® GeForce RTX™ 4060 Laptop GPU
8 GB GDDR6 VRAM (Up to 1890 MHz
Boost Clock, Up to 100W TGP)

DIS : NVIDIA® GeForce RTX™ 4050 Laptop GPU
6 GB GDDR6 VRAM (Up to 2055 MHz
Boost Clock, Up to 100W TGP)

Memory

16 GB / 32 GB / 64 GB; 7467 MHz Dual Channel

Storage

PCIe Gen 4 2280 M.2 : 512 GB / 1 TB

Camera & Microphone

5M Super Resolution Webcam
IR Camera + ToF
Camera Shutter
4 Voice ID Microphones

Audio

UMA : 4 x Speakers (2 x SPL Speakers);
Smart AMP; Dolby Atmos® Audio
DIS : 6 x Speakers (4 x B2B Speakers);
Smart AMP; Dolby Atmos® Audio

Battery¹ (84Whr)

MobileMark® 2025 : TBD

Battclues 2.0 : TBD

Rapid Charge Boost : TBD

With Lenovo
AI Engine+

LENOVO SERVICES

Lenovo Premium Care Plus

Lenovo Premium Care Plus is the ultimate PC support experience with you as our priority 24/7. Enjoy personalized hardware and software support from a global network of elite technicians, along with accidental damage protection, fast repairs with onsite support, extended battery warranty, data migration assistance, and smart performance solutions that optimize PC performance and security.

Lenovo Smart Performance

Smart Performance Services within Lenovo Vantage will keep your system running at optimum performance and proactively fix issues that affect PC performance, internet performance, remove malware, and improve device security.

Lenovo Accidental Damage Protection

Avoid the hassles of unexpected damage & repair costs. With coverage for drops, spills, electric surges, and broken LCD screens, accidental damage protection makes it easy to repair to your PCs and ensures your device is up and running fast.

Lenovo CO₂ Offset Services

Offset the carbon emissions of your PC with Lenovo CO₂ Offset Services – an easy and transparent solution to offset emissions across the average lifecycle of your device. These offsets are invested in UN-approved initiatives like renewable energy or ecological projects, thus contributing towards a more sustainable future.

Lenovo Sealed Battery Warranty

Long-lasting battery life is not just a feature but a necessity to help you stay productive and connected all day long. Protect your PC's sealed battery from degradation, enjoy hassle-free battery replacement service, and safeguard your PC from future battery failure with our Sealed Battery Warranty Service.

Lenovo Warranty Extensions (Up to 3 Years Duration)

Gain complete peace of mind by extending your base warranty to up to 3 years and minimize unexpected repair costs.

WWW.LENOVO.COM

Lenovo reserves the right to alter product offerings and specifications at any time, without notice. Lenovo makes every effort to ensure accuracy of all information but is not liable or responsible for any editorial, photographic or typographic errors. All images are for illustration purposes only. For full Lenovo product, service and warranty specifications visit www.lenovo.com. Lenovo makes no representations or warranties regarding third party products or services. **Trademarks:** The following are trademarks or registered trademarks of Lenovo: Lenovo, the Lenovo logo, ideapad, IdeaCentre, yoga and yoga home. Microsoft, Windows and Vista are registered trademarks of Microsoft Corporation. Intel, the Intel logo, Intel Inside, Intel Core, and Core Inside are trademarks of Intel Corporation in the U.S. and/or other countries. Other company, product and service names may be trademarks or service marks of others. Visit www.lenovo.com/lenovo/us/en/safecompl/ periodically for the latest information on safe and effective computing. ©2024 Lenovo. All rights reserved.

DESIGN

Display

16" 3.2K (3200 x 2000) 165 Hz, 16:10,
PureSight Pro MiniLED, 1200 nits, Delta E<1,
100% sRGB, 100% P3, 100% Adobe RGB,
Dolby Vision®, VESA Certified DisplayHDR™
1000, TÜV Low Blue Light Certification,
Eyesafe Certification, Glass Touch

16" 3.2K (3200 x 2000) 165 Hz, 16:10,
PureSight Pro MiniLED, 1200 nits, Delta E<1,
100% sRGB, 100% P3, 100% Adobe RGB,
Dolby Vision®, VESA Certified DisplayHDR™
1000, TÜV Low Blue Light Certification,
Eyesafe Certification, Matte

16" 3.2K (3200 x 2000) 165 Hz, 16:10,
PureSight Pro IPS, 400 nits, Delta E<1,
100% sRGB, 100% P3, Dolby Vision®,
TÜV Low Blue Light Certification,
Eyesafe Certification, Glass Touch

16" 3.2K (3200 x 2000) 165 Hz, 16:10,
PureSight Pro IPS, 400 nits, Delta E<1,
100% sRGB, 100% P3, Dolby Vision®,
TÜV Low Blue Light Certification,
Eyesafe Certification, Matte

16" 2.5K (2560 x 1600) 120 Hz, 16:10,
IPS, 400 nits, Delta E<1.5, 100% sRGB,
Dolby Vision®, TÜV Low Blue Light
Certification, Eyesafe Certification, Matte

Dimensions (W x D x H)²

(mm) : 362.72 x 253.69 x as thin as 13.9
(inches) : 14.28" x 9.98" x as thin as 0.71"

Weight

Starting at 2.19 kg (4.83 lbs)

Hinge

180°

Colors

Tidal Teal | Luna Grey

CONNECTIVITY

WLAN

WiFi 6E

Bluetooth®

Bluetooth® 5.3³

Input/Output (I/O) Ports

Left

1 x DC Plug-in
1 x HDMI™ 2.1 (6 Gbps, up to 4K/60 Hz)
1 x USB Type-C™ Intel® Thunderbolt™ 4
1 x USB Type-C™ Full Function
(USB 3.2 Gen 2⁴, PD 3.0, DP 1.4)
1 x Audio Combo Jack

Right

1 x USB-A 3.2 Gen 1⁴ (Always-On)
1 x USB-A 3.2 Gen 1⁴
1 x Full-sized SD Card Reader UHS-I

PRELOADED SOFTWARE

- Windows 11 Home/Pro
- Creator Zone (OTA Update)
- Lenovo Vantage
- Microsoft 365 Trial
- McAfee® LiveSafe™
- Amazon Alexa
- Dolby® Access (Dolby Vision® and Atmos®)

NOTEABLE MENTIONS

- Carbon Neutral Certified⁵
- Plastic-free Packaging
- EPEAT® Gold-registered⁶
- 50% Recycled Aluminum in the Bottom Cover
- ENERGY STAR® rated

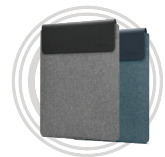
OPTIONS & ACCESSORIES



Lenovo Yoga True Wireless Stereo Earbuds



Lenovo Yoga Pro Mouse



Lenovo Yoga Sleeves

McAfee® LiveSafe™

Register McAfee® to enjoy these benefits in your FREE 30-day trial.

- Award-winning Antivirus
- Password Manager
- Safe Web Browsing
- Multi-device Compatibility
- Identity Theft Protection
- Free Customer Support

* Example of Lenovo catalogue naming convention



Intel® platform codes

Gemini Lake: IGM, Whiskey Lake: IWL, Ice Lake: ILL, Gemini Lake: IGL, Comet Lake: IML, Tiger Lake: ITL, Alder Lake: IAP, Alder Lake-HX: IAX, Alder Lake-U15: IAU, Alder Lake-P28: IAP, Alder Lake-P28/U15: IAL, Alder Lake-H45: IAH, Alder Lake N: IAN, Raptor Lake-PX: IRP, Raptor Lake-H: IRH, Raptor Lake-HX: IRX, Alder Lake-M U9: IAM, Raptor Lake U: IRU, Meteor Lake-P: IMP, Raptor Lake-P: IRP, Raptor Lake-B: IRB, Raptor Lake-P28/U15: IRL, Raptor Lake-B: IRZ, Meteor Lake-H: IMH.



Lenovo