

# Yoga 7i 2-in-1 (14", 9)

## Shape your creativity.

Whenever inspiration strikes, the Lenovo Yoga 7i 2-in-1 delivers power and views that go beyond 360°. Unlock new AI experiences, performance, and battery life with the latest Intel® Core™ Ultra processors. This laptop is the ideal canvas to capture your ideas. Sights and sound unite with spatial sound optimized by Dolby Atmos®.



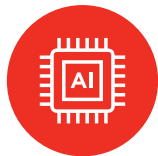
### Unlock new AI experiences

Unlock AI accelerated experiences with the latest Intel® Core™ Ultra processors, like creating images or music from text or dramatically improving photos and videos in a few clicks. Unleash supercharged visuals With Intel® Integrated graphics for an elevated creative journey and experience longer battery life that tops up quickly with Rapid Charge Express\*.



### Inspiration at all directions

With 360° of versatility, the Yoga 7i 2-in-1 unlocks your creative mobility and an ergonomic style with the details on this minimal masterpiece, from its mindful comfort edged design and inspiring colors to its one-handed opening and wide array of ports.



### With smarts to match

All that adaptability comes with equal smarts - Lenovo AI Engine+ is an ecosystem of intuitive features designed to enhance your creativity. Look sharp in the best light on the 2MP FHD camera and your voice comes through loud and clear with Smart Noise canceling. And with Smart Login, your day starts instantly with just one look.



### Pitch and pixel perfect

Enjoy the deepest blacks, richest colors, and smoothest action on up to 14" 2.8K PureSight OLED display with Dolby Vision®. Every scene is a cinematic event with exacting shades from up to 100% DCI-P3 color gamut and fluid movements of up to 120 Hz refresh rate. With on-board spatial Dolby Atmos® sound, it's a soundscape that flows all around you.



### Go-time from the get-go

Wherever you seek your ideas, the Yoga 7i 2-in-1 runs with you. Delivering up to 25.5 hours of video playback, you're never separated from your productivity and creativity. And when you need to recharge at the end of the day, Rapid Charge Express makes sure you're up and running for up to 3 hours of battery life in just a 15-minute charge\*.



\* For standard Rapid Charge Express, charge for 15 minutes in standby mode or while powered off for up to three hours of battery life based on test results using continuous local video playback on the latest update of Windows 11 (with 150 nits brightness at default volume level). Actual battery life will vary and depends on many factors such as product configuration and usage, software use, wireless functionality, power management settings, and screen brightness. The maximum capacity of the battery will decrease with time and use. Requires included 65W adapter.

# Yoga 7i 2-in-1 (14", 9)

## SPECIFICATIONS

Yoga 7 2-in-1 14IML9\*

### PERFORMANCE

#### Processor

Intel® Core™ Ultra 7 Processor (H28/U15)  
Intel® Core™ Ultra 5 Processor (H28/U15)

#### Operating System

Windows 11

#### Graphics

Intel® Graphics / Intel® Arc™ Graphics

#### Memory

LPDDR5X : Up to 32 GB<sup>1</sup>; Dual Channel 6400 MHz

#### Storage

PCIe SSD Gen 4 : 512 GB / 1 TB

#### Camera & Microphone

1080p FHD IR RGB Camera with  
Privacy Shutter with Dual Array Microphone

#### Audio

2 x 2W Speakers  
Dolby Atmos® Audio

#### Battery<sup>2</sup> (71Whr)

##### LCD

Local Video Playback 1080p: Up to 25.5 Hours

MobileMark® 2025 : Up to 14.5 Hours

##### FHD OLED

Local Video Playback 1080p: Up to 22.5 Hours

MobileMark® 2025 : Up to 12.5 Hours

##### 2.8K PureSight OLED

Local Video Playback 1080p: Up to 19 Hours

MobileMark® 2025 : Up to 11 Hours

##### Rapid Charge Express<sup>3</sup>

### DESIGN

#### Display

14" 2.8K (2880 x 1800) OLED PureSight,  
120 Hz, 16:10, 400 nits, 100% DCI-P3,  
Dolby Vision®, 10-point Multitouch Glass

14" WUXGA (1920 x 1200) OLED,  
60 Hz, 16:10, 400 nits, 100% DCI-P3,  
Dolby Vision®, 10-point Multitouch Glass

14" WUXGA (1920 x 1200) LCD, 60 Hz,  
16:10, 300 nits, 45% NTSC, Dolby Vision®,  
10-point Multitouch Glass

#### 4-Side Narrow Bezel (91% AAR)

Left/ Right: 2.49 mm

Top : 5.33 mm

Bottom : 10.03 mm

#### Dimensions (W x D x H)<sup>3</sup>

(mm) : 317.72 x 222.13 x as thin as 16.64  
(inches) : 12.51" x 8.75" x as thin as 0.66"

#### Weight

OLED : Starting at 1.49 kg (3.28 lbs)

LCD : Starting at 1.61 kg (3.55 lbs)

#### Hinge

360°

#### Colors

Storm Grey  
Tidal Teal



<sup>1</sup> 32 GB variant available in certain markets. | <sup>2</sup> All battery life claims are approximate and based on two methods of testing: MobileMark® 2025 battery life benchmark @ 250 nits perceptual brightness and continuous 1080p video playback @ 150 nits brightness on the latest update of Windows 11. Actual battery life will vary and depends on many factors such as product configuration and usage, software use, wireless functionality, power management settings, and screen brightness. The maximum capacity of the battery will decrease with time and use. | <sup>3</sup> For standard Rapid Charge Express, charge for 15 minutes in standby mode or while powered off for up to three hours of battery life based on test results using continuous local video playback on the latest update of Windows 11 (with 150 nits brightness at default volume level). Actual battery life will vary and depends on many factors such as product configuration and usage, software use, wireless functionality, power management settings, and screen brightness. The maximum capacity of the battery will decrease with time and use. Requires included 65W adapter. | <sup>4</sup> Height is calculated using T2 measurements and should be considered 'as thin as'. | <sup>5</sup> The actual transfer speed of the USB 3.2 will vary and, depending on many factors, such as the processing capability of host and peripheral devices, file attributes and other factors related to system configuration and your operating environments, may be slower than a speed of 20 Gbit/s. | <sup>6</sup> Available OTA. | <sup>7</sup> EPEAT®-registered where applicable — see [www.epeat.net](http://www.epeat.net) for registration status by country.

With Lenovo  
**AI Engine+**

## LENOVO SERVICES

#### Lenovo Premium Care Plus

Lenovo Premium Care Plus is the ultimate PC support experience with you as our priority 24/7. Enjoy personalized hardware and software support from a global network of elite technicians, along with accidental damage protection, fast repairs with onsite support, extended battery warranty, data migration assistance, and smart performance solutions that optimize PC performance and security.

#### Lenovo Smart Performance

Smart Performance Services within Lenovo Vantage will keep your system running at optimum performance and proactively fix issues that affect PC performance, internet performance, remove malware, and improve device security.

#### Lenovo Accidental Damage Protection

Avoid the hassles of unexpected damage & repair costs. With coverage for drops, spills, electric surges, and broken LCD screens, accidental damage protection makes it easy to repair to your PCs and ensures your device is up and running fast.

#### Lenovo Sealed Battery Warranty

Long-lasting battery life is not just a feature but a necessity to help you stay productive and connected all day long. Protect your PC's sealed battery from degradation, enjoy hassle-free battery replacement service, and safeguard your PC from future battery failure with our Sealed Battery Warranty Service.

#### Lenovo Warranty Extensions (Up to 3 Years Duration)

Gain complete peace of mind by extending your base warranty to up to 3 years and minimize unexpected repair costs.

## McAfee® LiveSafe™

Register McAfee® to enjoy these benefits in your FREE 30-day trial.

- Award-winning Antivirus
- Multi-device Compatibility
- Password Manager
- Identity Theft Protection
- Safe Web Browsing
- Free Customer Support

## WWW.LENOVO.COM

Lenovo reserves the right to alter product offerings and specifications at any time, without notice. Lenovo makes every effort to ensure accuracy of all information but is not liable or responsible for any editorial, photographic or typographic errors. All images are for illustration purposes only. For full Lenovo product, service and warranty specifications visit [www.lenovo.com](http://www.lenovo.com). Lenovo makes no representations or warranties regarding third party products or services. **Trademarks:** The following are trademarks or registered trademarks of Lenovo: Lenovo, the Lenovo logo, ideapad, IdeaCentre, yoga and yoga home. Microsoft, Windows and Vista are registered trademarks of Microsoft Corporation. Intel, the Intel logo, Intel Inside, Intel Core, and Core Inside are trademarks of Intel Corporation in the U.S. and/or other countries. Other company, product and service names may be trademarks or service marks of others. Visit [www.lenovo.com/lenovo/us/en/safecomp/](http://www.lenovo.com/lenovo/us/en/safecomp/) periodically for the latest information on safe and effective computing. ©2024 Lenovo. All rights reserved.

### CONNECTIVITY

#### WLAN

2x2 Intel® WiFi 6E (802.11 ax)

#### Bluetooth®

Bluetooth® 5.2

#### Input/Output (I/O) Ports

##### Left Side

1 x HDMI 2.1 TMDS

2 x USB-C (Thunderbolt™ 4 /  
USB 3.2 Gen 2<sup>4</sup> / DP 1.4a / PD3.0)

1 x Audio Combo Jack (3.5 mm)

1 x NOVO Button

##### Right Side

1 x USB-A (USB 3.2 Gen 1)<sup>4</sup>

1 x MicroSD Card Reader  
(UHS-1 (104) PCIe Gen 1)

1 x Power Button

### PRELOADED SOFTWARE

- Windows 11 Home/Pro
- Lenovo Vantage
- Microsoft 365 Trial
- McAfee® LiveSafe™
- Dolby® Access (Dolby Vision® and Atmos®)
- Smart Note<sup>5</sup>

### NOTEABLE MENTIONS

- MIL-STD-810H
- EPEAT™ Gold<sup>5</sup>
- ENERGY STAR® 8.0
- TÜV Rheinland Natural Low Blue Light

### IN-BOX

#### Standard

- Lenovo Digital Pen 2

#### Optional

- Fingerprint Reader
- CO<sub>2</sub> Offset Service
- Yoga 600 Silent Mouse Bluetooth®, Luna Grey
- Yoga True Wireless Stereo Earbuds
- Yoga Sleeve, Luna Grey

## OPTIONS & ACCESSORIES



Lenovo Yoga  
600 Bluetooth®  
Silent Mouse



Lenovo Yoga  
True Wireless  
Stereo Earbuds



Lenovo Yoga  
Sleeve  
(14.5" and 16")

\* Example of Lenovo  
catalogue naming  
convention

Yoga	7	2-in-1	14	IML9
Sub-brand	Positioning	Form Factor	Screen Size	Platform Code
			Generation	

#### Intel® platform codes

Gemini Lake: IGM, Whiskey Lake: IWL, Ice Lake: ILL, Gemini Lake: IGL, Tiger Lake: ITL, Alder Lake: IAP, Alder Lake-HX: IAX, Alder Lake-U15: IAU, Alder Lake-P28: IAP, Alder Lake-P28/U15: IAL, Alder Lake-H45: IAH, Alder Lake N: IAN, Raptor Lake-PX: IRP, Raptor Lake-H: IRH, Raptor Lake-HX: IRX, Alder Lake-M U9: IAM, Raptor Lake U: IRU, Raptor Lake-P: IRP, Raptor Lake-P28/U15: IRL, Raptor Lake-B: IRB, Raptor Lake-B: IRZ, Meteor Lake-P: IMP, Meteor Lake-H: IMH, Meteor Lake: IML



Lenovo