

Lenovo  
Idea Tab Pro Gen 2

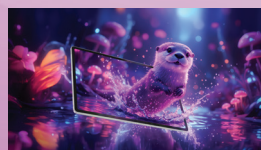
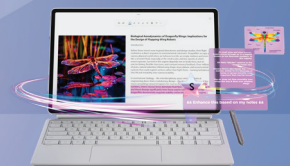
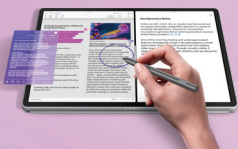
Lenovo  
Idea Tab Pro Gen 2  
Matte Edition

Smarter  
technology  
for all

Lenovo

# Built to think forward.

## Redefine for smarter, sharper study.



WWW.LENOVO.COM

# Lenovo Idea Tab Pro Gen 2

# Lenovo Idea Tab Pro Gen 2 Matte Edition

Smarter  
technology  
for all

Lenovo

## Specifications

### Design

#### Dimension<sup>1</sup>



#### Weight

-598 g ± 15 g (1.31 lbs ± 0.03 lbs)

#### Operating System at Launch

Android™ 16.  
(Expect OS upgrades until Android™ 18, and 4 years of security patches)

### Performance

#### Processor

**CPU**  
Snapdragon™ 8s Gen 4 (SM8735P) Mobile Platform (Octa-Core with Advanced NPU; 1 x Cortex-X4 @ 3.2 GHz + 3 x Cortex-A720 @ 3.0 GHz + 2 x Cortex-A720 @ 2.8 GHz + 2 x Cortex-A720 @ 2.0 GHz)

**GPU**  
Adreno™ 825 @ 1.15 GHz

#### Audio

4 x JBL Speakers Tuned by Dolby Atmos®;  
Dual Microphones

#### Memory (ROW)

**RAM + ROM** : 8 GB + 128 GB / 8 GB + 256 GB / 12 GB + 256 GB / 12 GB + 512 GB

**Card Slot** : MicroSD, exFAT up to 2 TB

#### Battery<sup>4</sup> (ROW SKU)

**Type** : Li-ion  
**Capacity** : 10200 mAh (Typical),  
Support of 45W Charging

**Video Playback** : Up to 12.5 Hours (YouTube Streaming)

**Web Browsing** : Up to 12.5 Hours (Chrome Browsing)

**Standby** : Up to 1610 Hours  
(Powered by Hibernation Mode)

#### Display

**Size** : 13"  
**Resolution** : 3.5K, 3504 x 2190  
**Screen** : LCD  
**Screen (Matte Edition)** : Paper-like Anti-glare Display  
**PPI** : 319  
**Color Gamut** : 99% DCI-P3  
**Color Depth** : 12-bit<sup>2</sup>  
**Refresh Rate** : 144 Hz  
**Brightness** : 600 nits (Typical); 800 nits HBM  
**Aspect Ratio** : 16:10  
**Contrast Ratio** : Up to 1400:1  
**Screen-to-Body Ratio** : 89%

#### Colors

Luna Grey  
Cloud Grey  
Jelly Mint

### Connectivity

#### Wireless Connectivity

**WLAN** : 802.11a/b/g/n/ac/ax/be  
WiFi 7; Tri-band  
(2.4 GHz / 5 GHz / 6 GHz)

**Bluetooth®** : 6.0

**WiFi Antenna** : 2x2 MIMO

**WiFi Direct** : Yes

**WiFi Display** : Yes

### Certifications

#### Idea Tab Pro Gen 2



#### Idea Tab Pro Gen 2 Matte Edition



#### Integrated Camera

**Front** : 8MP FF  
**Rear** : 13MP AF



#### Sensors

Accelerometer Sensor,  
RGB Sensor, Gyroscope, Hall Sensor

#### Card Slots

**Type** : Single Card Slot  
**Slots** : MicroSD Slot



#### Login Security

**Fingerprint** : No    **Face Unlock** : Yes

#### Buttons and Ports

Power Button, Volume Key,  
USB Type-C™ 3.2 Gen 1<sup>3</sup> (Charging /  
Audio / DP-Out), MicroSD Slot,  
Pogo-pin for Keyboard Connection

### Software

#### Preloaded Software<sup>5</sup>

- Google
- Chrome
- Gmail
- Maps
- YouTube
- Play Store
- Drive
- YT Music
- Meet
- Photos
- Messages
- Contacts
- Gboard
- Gemini
- Calculator
- Calendar
- Clock
- Files
- Google TV
- Play Games
- Play Books
- YouTube Kids
- Kids Space
- Entertainment Space
- Smart Connect
- Settings
- Notepad
- Recorder
- Weather
- Camera
- Lenovo Vantage
- Squid
- WPS Office
- WPS Office PC
- CapCut
- Smarter Reader
- Goodnotes
- MyScript Notes
- MyScript Math
- Google One
- Perplexity

### Accessories



<sup>1</sup> All data and test results are based on Lenovo internal lab testing. Actual results may vary depending on configuration, manufacturing process, and measurement method. Thickness does not include the camera bump. | <sup>2</sup> 12-bit color achieved through 10-bit hardware with 2-bit software extension. | <sup>3</sup> Depending on many factors such as the processing capability of peripheral devices, file attributes, and other factors related to system configuration and operating environments, the actual transfer rate using the various USB connectors on this device will vary and is typically slower than the data rates as defined by the respective USB specifications: 5 Gbit/s for USB 3.2 Gen 1; 10 Gbit/s for USB 3.2 Gen 2 & 20 Gbit/s for USB 3.2 Gen 2 x 2. | <sup>4</sup> All battery life claims are approximate and based on internal testing under optimal laboratory and network conditions. Actual battery performance will vary and depend on numerous factors including product configuration and usage, software, operating conditions, wireless functionality, power management settings, screen brightness, and other factors. The maximum capacity of the battery will naturally decrease with time and usage. | <sup>5</sup> Actual application availability varies by country.

## What's in the Box\*

- Lenovo Idea Tab Pro Gen 2
- USB Type-C™ 2.0 Charging Cable
- In-box 45W Charging Adapter\*
- Quick-Start Guide & Safety, Warranty
- MicroSD Tray Pin

\* In-box charger availability may vary with country. Visit <https://support.lenovo.com> for more information about compatible charging adapters.

## Recommended Lenovo Services\*

**Lenovo Accidental Damage Protection One**  
Avoid the hassles of unexpected damage & repair costs. With coverage for drops, spills, electric surges, and broken LCD screens, accidental damage protection makes it easy to repair your Tablets, permitting a single repair during the coverage period.

**Lenovo Premium Care**  
Premium Care is a hassle-free solution for all your technical support needs. Upgrade your Lenovo Tablet's standard warranty to our

front-of-the-queue customer support service and get 24/7 real-person support via phone, chat, or email from experts who provide solutions on your first contact.

**Lenovo Premium Care Plus**  
Enjoy extra care, comfort, and peace-of-mind with Lenovo Premium Care Plus – a comprehensive support solution with personalized hardware and software support from experts and accidental damage coverage, with you as our priority 24/7.

\* Optional premium services and accessories may be sold separately. Availability varies depending on markets, resellers, configurations, and more.



WWW.LENOVO.COM



Lenovo reserves the right to alter product offerings and specifications at any time, without notice. Lenovo makes every effort to ensure accuracy of all information but is not liable or responsible for any editorial, photographic or typographic errors. All images are for illustration purposes only. For full Lenovo product, service and warranty specifications visit [www.lenovo.com](http://www.lenovo.com). Lenovo makes no representations or warranties regarding third party products or services. **Trademarks:** The following are trademarks or registered trademarks of Lenovo: Lenovo, the Lenovo logo, Yoga. Google and Android are trademarks of Google LLC. Ultrabook, Celeron, Celeron Inside, Core Inside, Intel, Intel Logo, Intel Atom, Intel Atom Inside, Intel Core, Intel Inside, Intel Inside Logo, Intel vPro, Itanium, Itanium Inside, Pentium, Pentium Inside, vPro Inside, Xeon, Xeon Phi and Xeon Inside are trademarks of Intel Corporation in the U.S. and/or other countries. WiFi 6 is a trademark of WiFi Alliance. HDR10+ is a trademark of HDR10+ Technologies, LLC. MyScript and Nebo are trademarks of the company MyScript, registered in France, the United States of America and other countries. Other company, product and service names may be trademarks or service marks of others. Battery life (and recharge times) will vary based on many factors including system settings and usage. ©2026 Lenovo. All rights reserved.